

**NEW**



# EPS INSULATED DUCTING

AIRTIGHT AND LIGHT

INNOVATIVE  
**PARTNER**

  
**Burgerhout®**  
a brand of M&G Group

## EPS INSULATED DUCTING

Burgerhout expands the product range of insulated ducting with a green, economically more favorable EPS variant. Supplemented with a new series of airtight roof cover plates. Just like the current EPP products, the new, insulated EPS duct range has a high insulation value, is easy to process and is ideal for connecting ventilation systems in modern construction. The new ducting system fits perfectly with the current range of wall and roof terminals and the updated plenum range.

The new, high-quality airtight roof cover plate fits perfectly with the Burgerhout ventilation systems and is available for every diameter and roof slope.

## Perfect solution for tight installation space

The completely newly developed system is equipped with new connecting pieces and has in addition to 90° bends, also specific 45° bends. The new PP connectors are narrower, allowing the system to be mounted tightly against the wall or ceiling. This offers a perfect solution for tight installations where there is little space for good insulated ducts.

## Excellent material properties

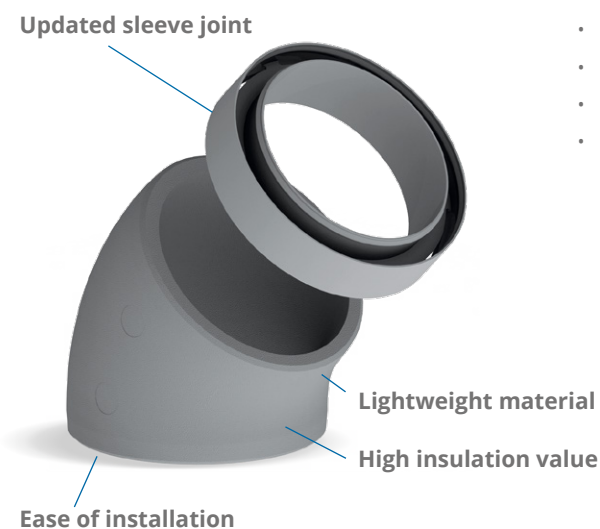
For the new EPS system Burgerhout uses an EPS variant. This is the modern form of EPS and is enriched with graphite. This gives the material a number of important technical characteristics in addition to the recognizable gray color. The system has an extra high insulation value ( $\lambda = 0.032 \text{ W/mK}$ ).

EPS is a lighter material in comparison with EPP, with a higher airtightness and fire rating. In addition to the energy-saving character of the new duct system, sustainability is important. The new system consists of 98% air and only 2% PS raw material. In addition, the parts are made with 100% green electricity. The system is 100% recyclable.



## All unique features

- High insulation value:  $\lambda = 0.032 \text{ W/mK}$
- Fire resistance: class E (EN 1501-1)
- Airtightness: class D (EN 13180) / ATC class 2
- Improved construction for compact installation
- Lightweight and easy to shorten
- No thermal bridge possible due to smart construction
- Specific 45 degree bend for minimum resistance



## Product range

### Extension, incl. socket

| Ø (mm) | Length (mm) | Art. no.     |
|--------|-------------|--------------|
| 125    | 500         | 40 048 05 51 |
| 125    | 1000        | 40 048 05 50 |
| 160    | 500         | 40 048 05 61 |
| 160    | 1000        | 40 048 05 60 |



### Elbow 90°, incl. socket

| Ø (mm) | Art. no.     |
|--------|--------------|
| 125    | 40 048 05 53 |
| 160    | 40 048 05 63 |



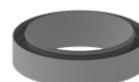
### Elbow 45°, incl. socket

| Ø (mm) | Art. no.     |
|--------|--------------|
| 125    | 40 048 05 52 |
| 160    | 40 048 05 62 |



### Socket

| Ø (mm) | Art. no.     |
|--------|--------------|
| 125    | 40 048 05 54 |
| 160    | 40 048 05 64 |



### Adapter insulated

| Ø (mm)       | Art. no.     |
|--------------|--------------|
| 150 - 160 mm | 40 048 05 69 |



### Universal ventilation bracket

| Application | Ø (mm)   | Art. no.     |
|-------------|----------|--------------|
| Thin-walled | 125, 160 | 40 047 04 59 |



### Airtight roofcover plate

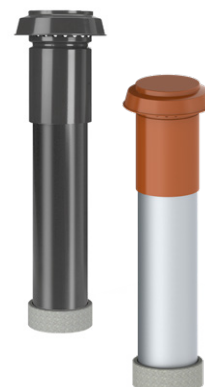
| Ø (mm)  | Colour | Angle ° | Art. no.     |
|---------|--------|---------|--------------|
| 125-180 | white  | 0-30    | 40 045 34 67 |
| 125-180 | white  | 30-60   | 40 045 34 68 |
| 180-235 | white  | 0-30    | 40 045 34 69 |
| 180-235 | white  | 30-60   | 40 045 34 70 |
| 235-302 | white  | 0-30    | 40 045 34 71 |
| 235-302 | white  | 30-60   | 40 045 34 72 |



## Accessoires

### Roof ventilation terminals

| Ø (mm) | Colour     | L (mm) | Art. no.            |
|--------|------------|--------|---------------------|
| 125    | Black      | 1000   | 40 048 <b>04 51</b> |
| 125    | Terracotta | 1000   | 40 048 <b>04 53</b> |
| 160    | Black      | 995    | 40 048 <b>06 00</b> |
| 160    | Terracotta | 995    | 40 048 <b>06 01</b> |



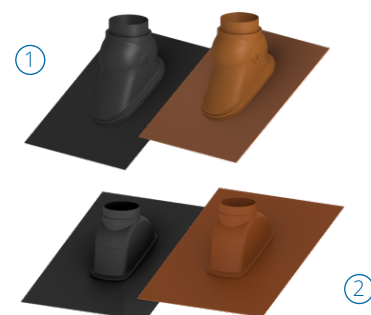
### Roof boarding bracket

| Ø (mm) | Colour    | Art. no.            |
|--------|-----------|---------------------|
| 125    | Unpainted | 40 045 <b>34 26</b> |
| 160    | Unpainted | 40 045 <b>34 38</b> |



### Roof flashing

|   | Ø (mm) |                         | Colour     | Art. no.            |
|---|--------|-------------------------|------------|---------------------|
| 1 | 125    | FX Easy Leadax Ø 160 mm | Black      | 40 047 <b>20 15</b> |
|   | 125    | FX Easy Leadax Ø 160 mm | Terracotta | 40 047 <b>20 16</b> |
| 2 | 160    | DX Leadax Ø 210 mm      | Black      | 40 045 <b>40 34</b> |
|   | 160    | DX Leadax Ø 210 mm      | Terracotta | 40 045 <b>40 35</b> |



### Walloutlet terminals

| Ø (mm) | Colour              | Art. no.            |
|--------|---------------------|---------------------|
| 125    | Black               | 40 048 <b>06 02</b> |
| 125    | White               | 40 048 <b>06 03</b> |
| 125    | Unpainted aluminium | 40 048 <b>06 05</b> |
| 160    | Black               | 40 048 <b>06 06</b> |
| 160    | White               | 40 048 <b>06 07</b> |
| 160    | Terracotta          | 40 048 <b>06 08</b> |
| 160    | Unpainted aluminium | 40 048 <b>06 09</b> |



### Airtight Coverplate metal

| Ø (mm)  | Colour | Angle  | Art. no.            |
|---------|--------|--------|---------------------|
| 94-125  | White  | 0-30°  | 40 045 <b>34 65</b> |
| 94-125  | White  | 30-60° | 40 045 <b>34 66</b> |
| 125-180 | White  | 0-30°  | 40 045 <b>34 67</b> |
| 125-180 | White  | 30-60° | 40 045 <b>34 68</b> |
| 180-235 | White  | 0-30°  | 40 045 <b>34 69</b> |
| 180-235 | White  | 30-60° | 40 045 <b>34 70</b> |
| 235-302 | White  | 0-30°  | 40 045 <b>34 71</b> |
| 235-302 | White  | 30-60° | 40 045 <b>34 72</b> |



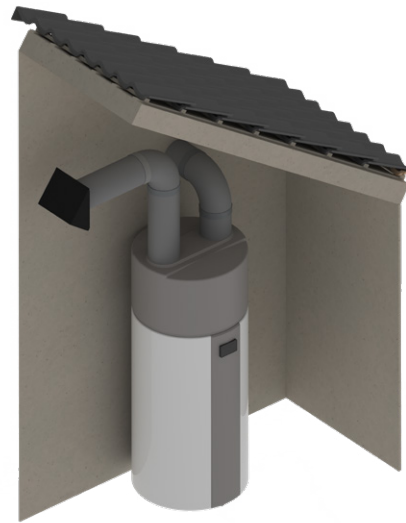
## The perfect solution for heatpump installations

Burgerhout expands the product range of insulated ducting with a complete kit to fit air driven heatpumps.

This kit consists out of all the standard Burgerhout articles to perfectly fit all standard heatpumps on the market.

For an optimal condensation prevention the kit contains the new EPS extensions and elbow, together with the new airtight roofcover plates to create a totally airtight building according current regulations. The kit is completed with our Burgerhout wall terminals.

The kit is the perfect solution for all your installation projects. All products come in one box to make your project as easy as possible. Together with the newly designed connection there is no thermal bridge possible due to the smart construction.

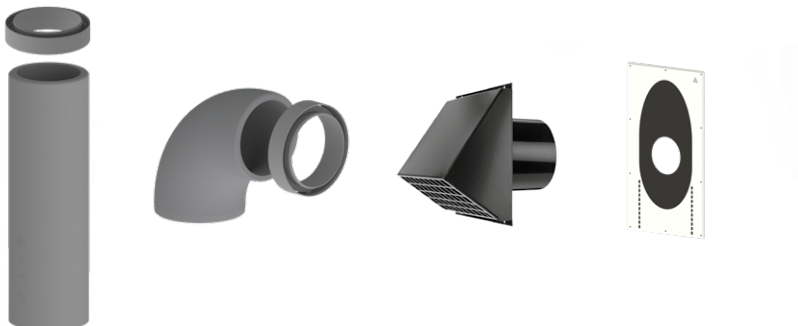


### Heat pump water heater kit

| Application       | Ø (mm)  | Art. no.     |
|-------------------|---------|--------------|
| Heat pump air-air | Ø160 mm | 41 012 22 83 |

### Kit contains the following parts:

|                                  |          |
|----------------------------------|----------|
| Extension, incl. socket          | 2 pieces |
| Elbow 90°, incl. socket          | 2 pieces |
| Walloutlet terminals, black      | 2 pieces |
| Airtight Coverplate 0-30°, White | 2 pieces |







**For over 150 years**, Burgerhout has been a specialist in the development and optimisation of safe and innovative flue gas discharge, air supply and air distribution solutions.

**Innovative partner** in flue venting & ventilation solutions