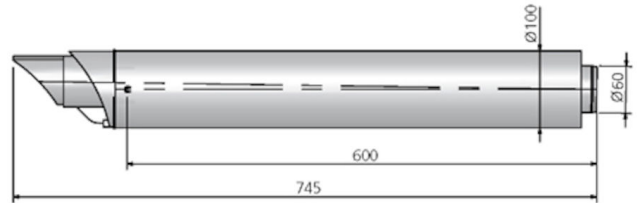
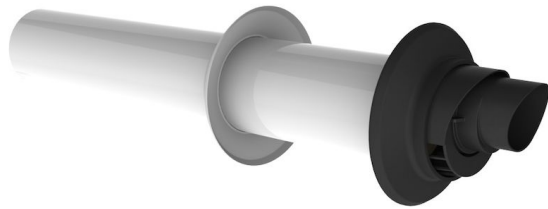


General information

Wall terminal AL 60/100



Specifications

Article number	400470098
Colour external part	Black (RAL 9005)
Material flue duct	Aluminium
Quality class flue duct	EN 573-3: 2019; EN AW-Al MgSi
Wall thickness flue duct nom (mm)	1,5
Material air duct	Galvanized steel (coated)
Quality class air duct	EN10346: DX52D
Wall Thicknesss (mm)	0,4
Colour air duct	White (RAL 9016)
Weight (kg)	1,54

Dimensions

Diameter flue duct nom (mm)	60
Diameter air duct nom (mm)	100
Outer dimensions (l x w x h mm)	715 x 100 x 100

Application Insights

Intended use	The exhaust of flue gas and the supply of combustion air
Location class	See intended use

Technical Specifications

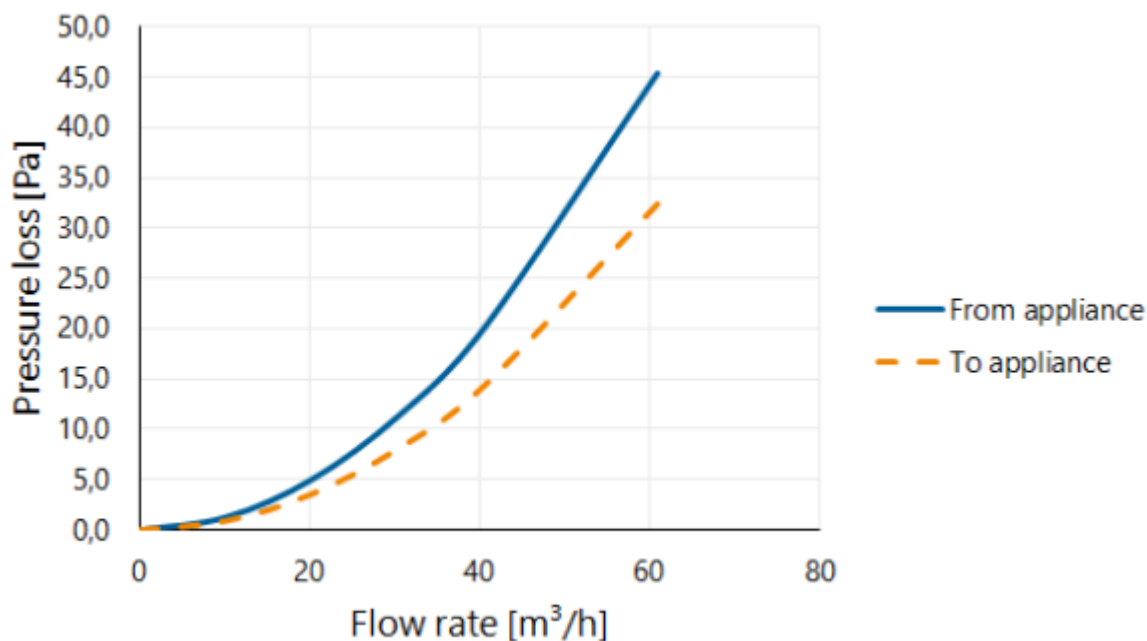
Declaration of performance	001-MG-ALU DoP
Harmonized standard	EN 1856-1: 2009
System according to DoP	T.1
CE Marking	T200 P1 W V1 L13 150 O00
ζF Flue duct	2,1
ζA Air duct	1,5
Designed for appliance type	C1
Wind direction property	-
Ice formation Property	Ice-free
Rain water ingress property Flue duct	Unprotected (W)
Rain water ingress property Air duct	Protected
Counter flow property	FL1
Wind velocity pressure PL (Pa)	0
Resistant to penetration of objects (mm)	<16
Other specifications	-

Mounting and installation

Always install according to the national regulations. For safe installation, consult the installation and associated mounting instructions, see Burgerhout.com.

Graph

Pressure loss versus flow rate



Table

Flow rate versus pressure loss

Flow rate			Static pressure loss	
[m/s]	[m³/h]	[l/s]	From appliance [Pa]	To appliance [Pa]
0	0	0	0,0	0,0
1	10	3	1,3	0,9
2	20	6	5,0	3,6
3	31	8	11,3	8,1
4	41	11	20,2	14,4
6	61	17	45,4	32,4