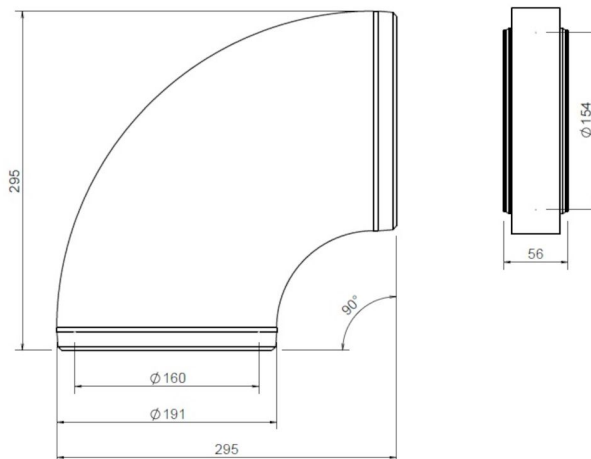
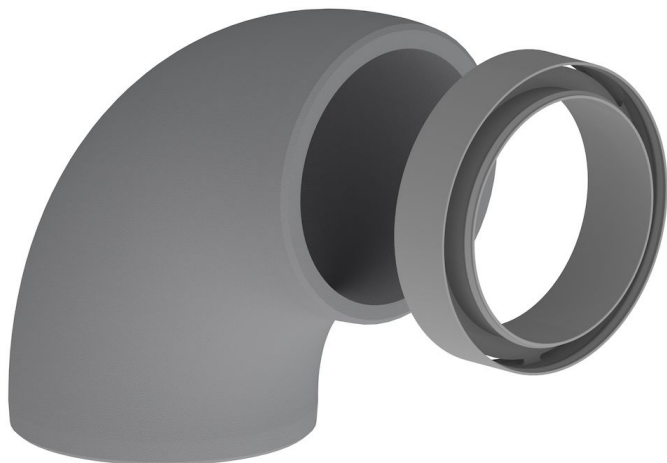


General information

EasyAir Elbow EPS 160 90°



Specifications

| | |
|---------------------|----------------|
| Article number | 400480563 |
| Product category | Insulated tube |
| Material | EPS |
| Colour | Gray |
| Wall Thickness (mm) | 15,5 |
| Weight (kg) | 0,24 |

Dimensions

| | |
|---------------------------|-----------------|
| Diameter inside (mm) | 160 |
| Diameter outside (mm) | 191 |
| Dimensions (l x w x h mm) | 295 x 191 x 295 |

Application Insights

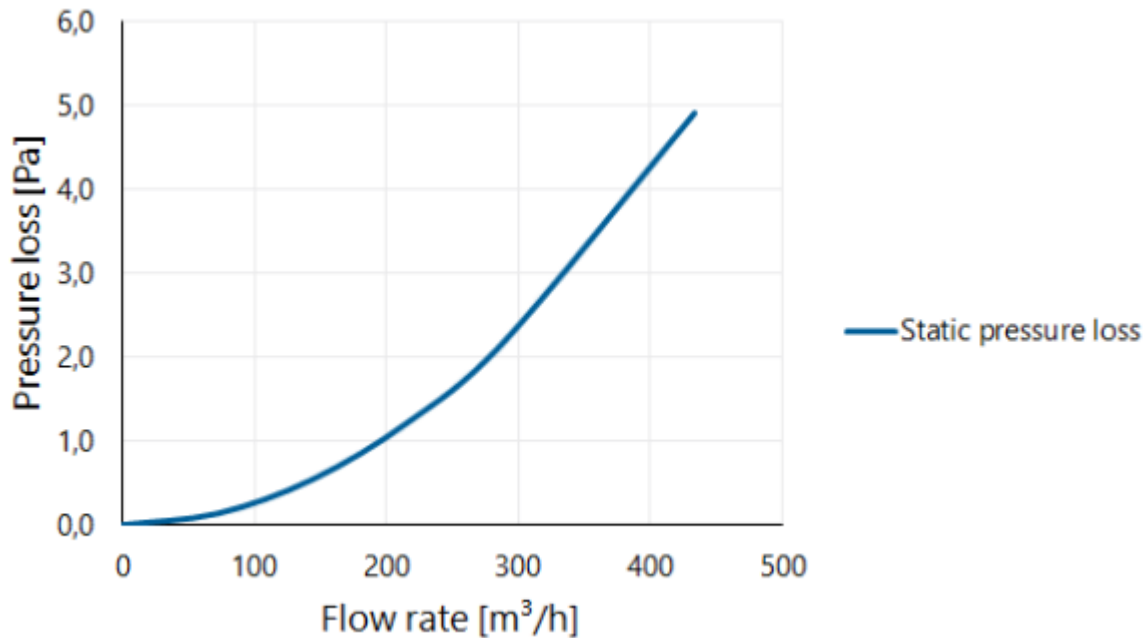
| | |
|------------------------|----------------|
| Intended use | Ventilation |
| Supply / Extract | Supply/Extract |
| Temperature range (°C) | -25 / +80 |

Technical Specifications

| | |
|--------------------------------------|-------|
| Maximum air flow (m ³ /h) | 425 |
| ζ extract | 0,23 |
| ζ supply | 0,23 |
| Air Tightness Class | 2 |
| λ Thermal conductivity (W/(m·K)) | 0,032 |
| R-value (m ² K/W) | 0,48 |
| Fire rating | E |
| Other specifications | - |

Graph

Pressure loss



Table

Flow velocity pressure table

| Flow rate | | | Static pressure loss [Pa] |
|-----------|--------|-------|---------------------------------|
| [m/s] | [m³/h] | [l/s] | |
| 0 | 0 | 0 | 0,0 |
| 1 | 72 | 20 | 0,1 |
| 2 | 145 | 40 | 0,5 |
| 3 | 217 | 60 | 1,2 |
| 4 | 290 | 80 | 2,2 |
| 6 | 434 | 121 | 4,9 |