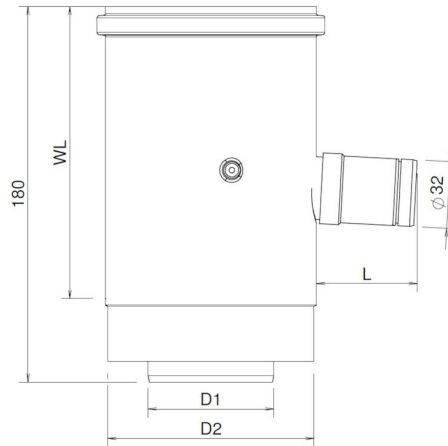
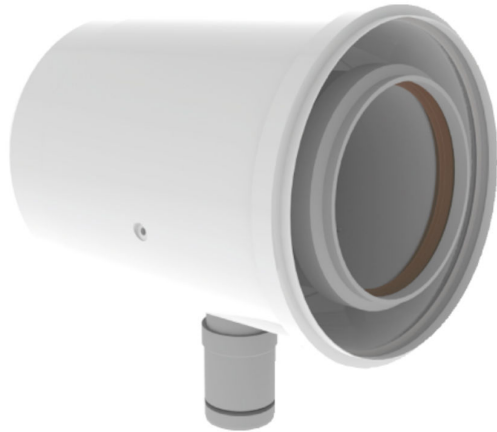


General information

TwinSafe Condensate trap PP Concentric 80/125



Specifications

| | |
|-----------------------------------|-------------------|
| Article number | 410084822 |
| Material flue duct | Plastic |
| Quality class flue duct | PP |
| Wall thickness flue duct nom (mm) | 2 |
| Material seal flue duct | EPDM |
| Material air duct | Aluminum (coated) |
| Quality class air duct | EN10346: DX52D |
| Wall Thickness (mm) | 2 |
| Material seal air duct | EPDM |
| Colour air duct | White (RAL 9016) |
| Weight (kg) | 0,37 |

Dimensions

| | |
|---------------------------------|-----------------|
| Diameter flue duct nom (mm) | 80 |
| Diameter air duct nom (mm) | 125 |
| Outer dimensions (l x w x h mm) | 180 x 180 x 135 |

Application Insights

| | |
|----------------|------------------------------------|
| Intended use | Discharge of Flue-gas condensation |
| Location class | For indoor use only |

Technical Specifications

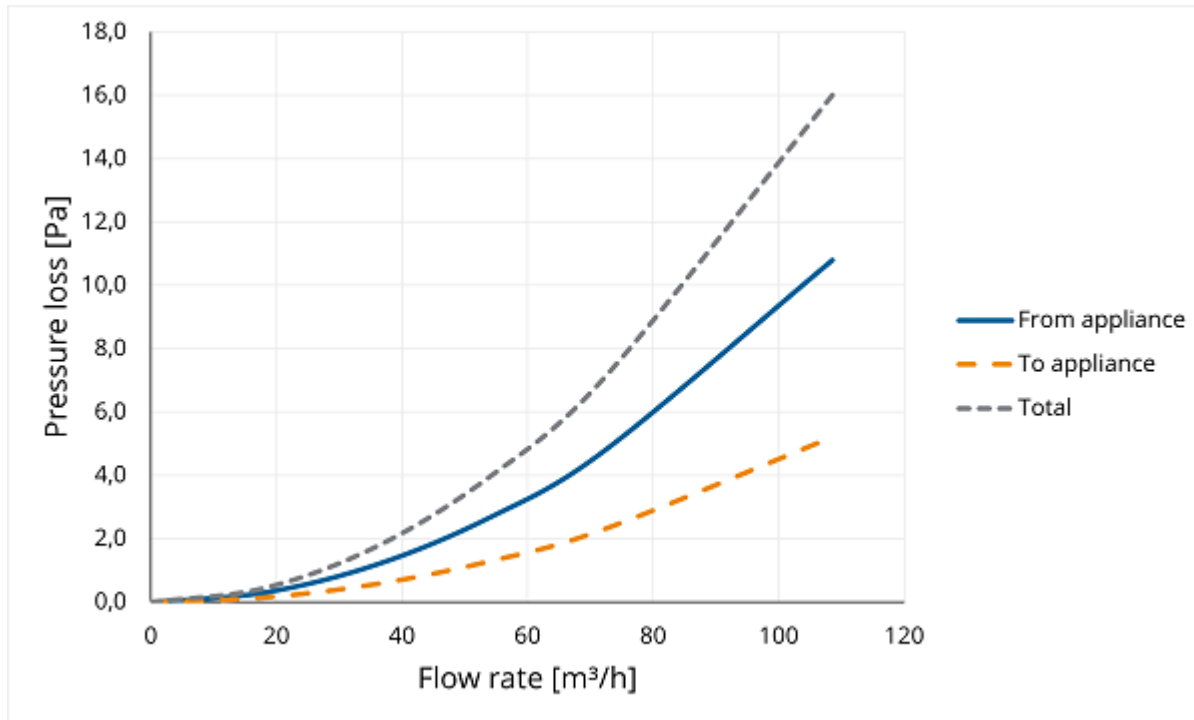
| | |
|--|---------------------------|
| Declaration of performance | 001-MG-PP DoP |
| Harmonized standard | EN 14471: 2013 + A1: 2015 |
| System according to DoP | 0.3 |
| CE Marking | T120 H1 W2 O00 LI/LE E U0 |
| ζF Flue duct | 0,5 |
| ζA Air duct | 0,5 |
| Thermal resistance flue duct (m ² K/W) | 0 |
| Thermal resistance air duct (m ² K /W)0 | |
| Roughness value flue duct (m) | N.a. |
| Roughness value air duct (m) | N.a. |
| Equivalent length (m) | 1,67 |
| Other specifications | - |

Mounting and installation

Always install according to the national regulations. For safe installation, consult the installation and associated mounting instructions, see Burgerhout.com.

Graph

Pressure loss versus flow rate



Table

Flow rate versus pressure loss

| Flow rate | | | Static pressure loss | | |
|-----------|--------|-------|----------------------|-------------------|------------|
| [m/s] | [m³/h] | [l/s] | From appliance [Pa] | To appliance [Pa] | Total [Pa] |
| 0 | 0 | 0 | 0,0 | 0,0 | 0,0 |
| 1 | 18 | 5 | 0,3 | 0,1 | 0,4 |
| 2 | 36 | 10 | 1,2 | 0,6 | 1,8 |
| 3 | 54 | 15 | 2,7 | 1,3 | 4,0 |
| 4 | 72 | 20 | 4,8 | 2,3 | 7,1 |
| 6 | 109 | 30 | 10,8 | 5,2 | 16,0 |